

INSTALLATION PROCEDURE

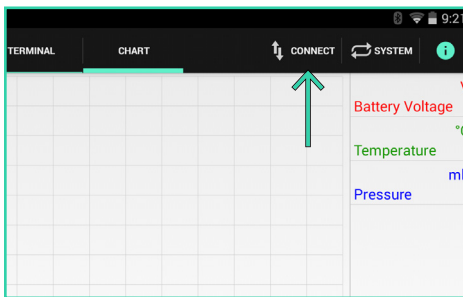
Install the latest version of the Freefly Configurator App available at freeflysystems.com before proceeding. A firmware update for the MōVI allows new features, bug fixes and enhancements to be installed on the gimbal control unit.

This note describes the update procedure and using the Freefly Configurator App (GUI) from a Bluetooth enabled Android device.

NOTE:

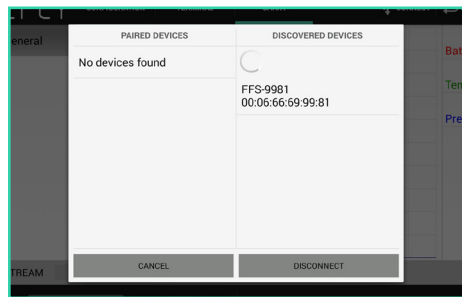
Prior to starting the firmware update process please ensure that you have the Firmware Jumper (see Image 01 below). If the firmware process is interrupted (Bluetooth connectivity drops, MōVI battery runs out, etc.) it can cause the MōVI to become unresponsive, or "bricked". To recover and restart the firmware update, you will need the Firmware Jumper.

Check to make sure the most current firmware version is not already installed before proceeding. See step 11 below for information on how to check the firmware version.



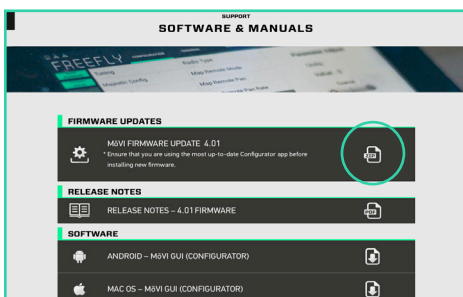
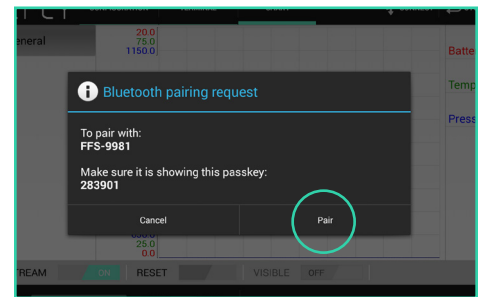
STEP 01

Power the MōVI and connect via the GUI. To connect select **CONNECT** in the top right corner of the Freefly Configurator software.



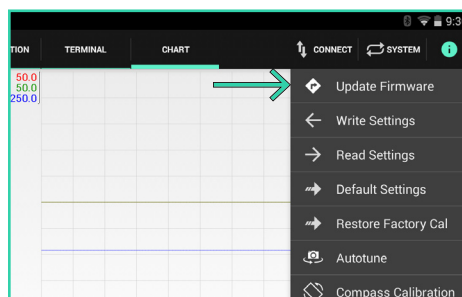
STEP 02

In the Select Bluetooth Device window select the MōVI Bluetooth ID (usually beginning with FFS). If pairing is required, as in the following figure, use the code 1234 and select **PAIR**.



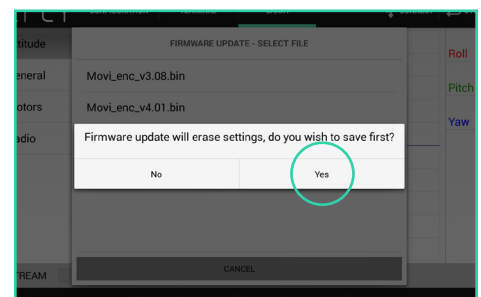
STEP 03

Download the firmware file named "Movi_enc_v4.01.bin" and place in the **Freefly>Firmware** folder within the Android itself or alternatively by connecting to a PC.



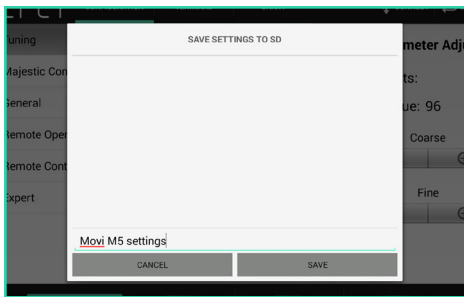
STEP 04

Ensure the connection is reliable and that the unit is not too far away from the Android tablet. Also make sure the battery has sufficient charge to cover the short update period. Initiate a firmware update by clicking on **SYSTEM>Update Firmware**



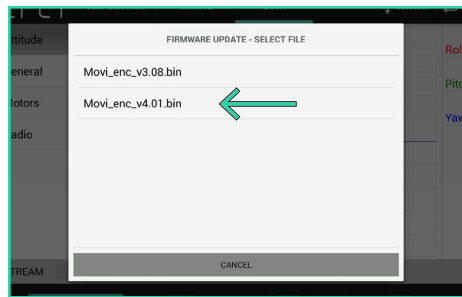
STEP 05

The application will ask if you wish to save configuration settings. It is strongly recommended that this is done to preserve the current tuning parameters and remote configurations.



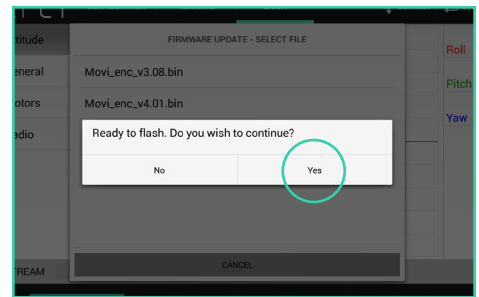
STEP 06

If settings are to be saved, they will be downloaded from the control unit and then stored within the folder **Freefly>Parameters**.



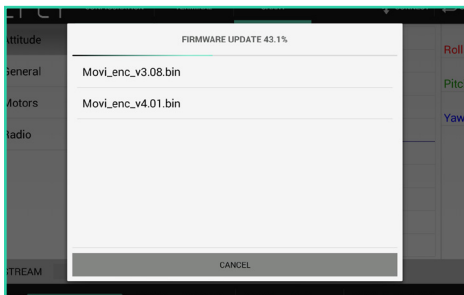
STEP 07

The application will now ask for the binary file to be installed. Select "**Movl_enc_v4.01.bin**" that you previously save and placed in the **Freefly>Firmware** folder.



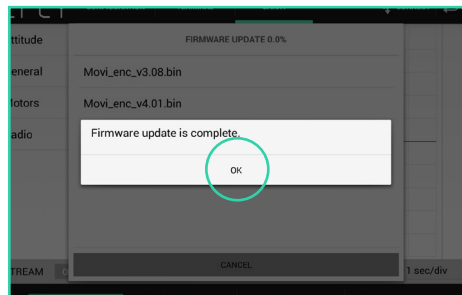
STEP 08

The application will confirm that Bluetooth is live. Click **YES** and the GUI will call the flasher utility to perform the firmware update automatically.



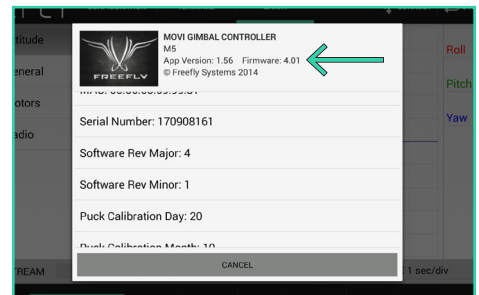
STEP 09

The flasher utility will execute and indicate progress in a status bar and percentage readout above the firmware file name. Do not interrupt this process until it is complete.



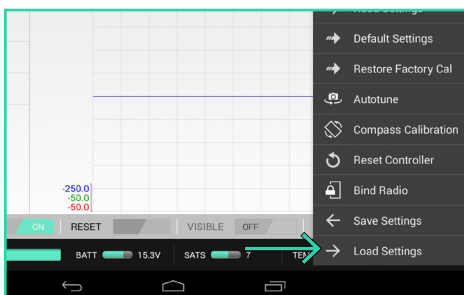
STEP 10

Once complete click **OK** to exit the firmware update process. Next, de-power and re-power the gimbal to have a clean re-boot on the new firmware. The firmware will load with stiffness settings of zero to enable updating without a balanced gimbal and to prevent damage during the reboot process. At this point the new firmware has been installed and all the configuration settings are set to factory default.



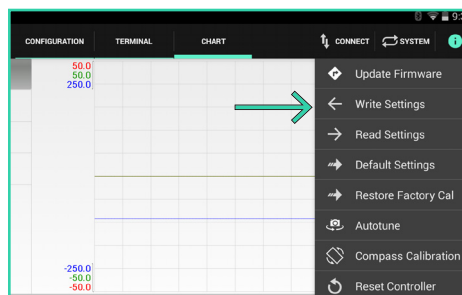
STEP 11

Reconnect to the controller via the GUI and confirm the new firmware is installed and the gimbal is operational. A simple way to do this is click on the Freefly logo in the top left of the Freefly Configurator. It should be confirmed the firmware is updated to the new version - in this example **v4.01**.



STEP 12

Lastly reload the configuration settings to restore the gimbal to previous configuration. Load the settings from the tablet via **SYSTEM>Load Settings**. Point to the directory and the recently saved configuration file and click on **Open**.



STEP 13

Now the original settings are loaded onto the gimbal controller, verify gimbal operation and tuning. If everything is confirmed **OK** then store the settings onto the gimbal's local flash memory via **SYSTEM>Write Settings**. The gimbal is now ready to use.



IMAGE 01

To receive instructions and/or a Firmware Jumper please contact: support@freeflysystems.com.